

## Funds and Indirect Real Estate

### Establishment of Real Estate Funds

#### Our funds work includes:

**Abacus Investment Partnership** - a private investor fund for Jones Lang LaSalle

**Aberdeen UK Active** - a listed Irish company

**Apia Regional Office Fund** - a regional offices fund for Aviva Investors

**Ashtenne Industrial Fund Limited Partnership** - for Aviva Investors

**Aurora Europe Property Fund** - a European fund of funds managed by DTZ

**Beach Student Accommodation Fund** - for Aviva Investors

**BHSE Limited Partnership** - a high net worth fund to develop office sites for Jones Lang LaSalle

**Capital Residential Fund** - a London residential fund for Aviva Investors

**Carbon Trust Enterprise** - Threadneedle Low Carbon Workplace Fund

**Catalyst European Real Estate Fund** - a pan-European fund

**Clearance Real Estate Equity Fund** - a hedge fund established by Clearance Capital which invests in real estate securities

**CB Richard Ellis GMM Global Alpha Fund Series FCP-SIF** - a global open ended fund of funds.

**Climate Change Property Fund** - a sustainable real estate fund

**Community Fund II** - managed by the Mill Group, advising the funding consortium led by Clerical Medical

**Corporate Centres Fund** - a serviced offices fund for Aviva Investors

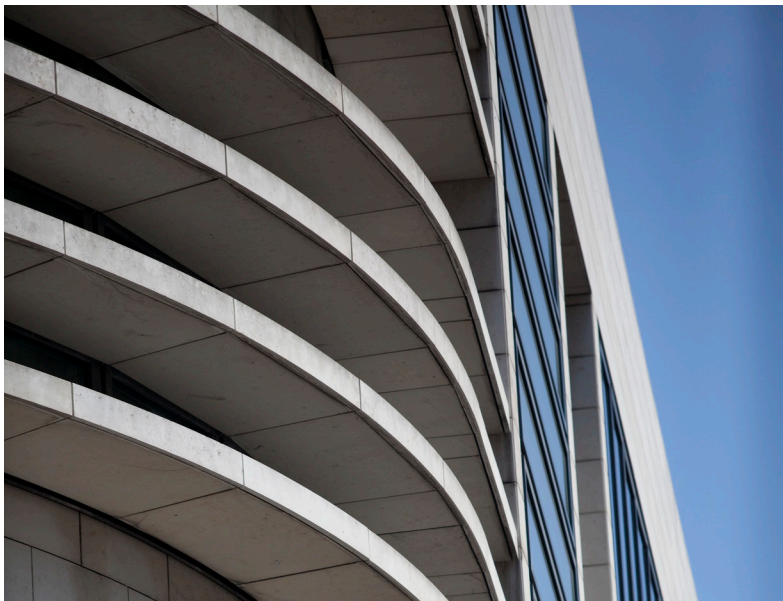
**CPPI Bridgewater Place LP** - a private investor fund for development of Bridgewater Place, Leeds for Jones Lang LaSalle

Nabarro Real Estate Investment Funds team ranked in band 1 in Chambers Directory 2012.



# “The team excels at real estate funds.”

## Chambers Directory, 2011



**Curzon Capital Partners III** - a pan-European fund for Tristan Capital Partners

**Easter Development Partnership** - a high net worth fund to develop industrial property

**€uroind High Income Fund** - IO Group's pan European fund advising ABP, Aviva Investors, a Middle Eastern investor, Alecta, Insight and others

**European Real Estate Debt Fund** - a fund established by Duet Private Equity and Forum Partners to invest in and provide debt for European real estate

**Euro Industrial Fund** - a high net worth fund for investment in €uroind High Income Fund for Jones Lang LaSalle

**Frogmore Real Estate Partners I and II** - UK opportunity funds

**German Retail Property Fund** - a GPT Halverton fund, advising all institutional investors

**Global Switch Partnership** - a European switch centres fund for Aviva Investors

**Grosvenor London Office Fund**

**Grosvenor Festival Place Fund**

**Grosvenor Liverpool Fund** - for Hermes and others, Grosvenor's fund to develop Paradise Street, Liverpool

# “Especially recommended for its excellent real estate funds practice” Legal 500, 2010

Grosvenor Residential Investment Fund

Grosvenor Shopping Centre Fund

Henderson UK Retail Warehouse Fund

Igloo Regeneration Partnership - an urban regeneration fund

LaSalle UK Commercial Property Fund - for private clients of Barclays Bank

Lime Property Fund - for Aviva Investors

Mansford Opportunity Fund III – investing in European and UK property

Mountgrange - a UK opportunity fund

Nordic Retail Fund, a Pretego fund – advising the anchor institutional investors

Norwich Union Public Private Partnership - a public sector fund, for Aviva Investors

Osprey Limited Partnership - a mixed portfolio fund for Valad

Pan European Core Fund - an open ended fund for CB Richard Ellis Investors

Property Income Trust for Charities - for Mayfair Capital Partners

Quercus Healthcare Property Fund - a healthcare fund for Quintain

Retail Development Partnership - a Jones Lang LaSalle fund

Retirement Housing Partnership - for Aviva Investors

Rugby Estates Investment Trust Plc - the first REIT investment fund

Rutley Russia Property Fund Limited - a Guernsey closed-ended investment company

Rutley East African Property Fund Limited

Terrace Hill Development Partnership - a private investor fund for UK development projects

The Junction - a retail warehouse fund for Aviva Investors

The Mall - a retail fund for Aviva Investors

UNITE UK Student Accommodation Fund - an open-ended fund investing in direct-let student accommodation

## SAMPLE OF OUR CLIENTS

- Aegon
- Aviva Investors
- AXA
- BNP Paribas
- Carbon Trust Enterprise
- Catalyst Capital
- CBRE Investors
- Climate Change Capital
- Cordea Savills
- DTZ Investment Management
- Europa Capital
- Frogmore
- F&C REIT
- Grosvenor Fund Management
- Goodman
- Hermes REIM
- ING REIM
- Mayfair Capital Partners
- Melford Capital Partners
- Mountgrange
- Pacific Real Estate Capital
- Pramerica
- Quintain
- Rockspring
- Rreef
- Rugby Estates
- Rutley Capital Partners
- Standard Life
- Tristan Capital Partners
- UBS
- UNITE
- Valad



N A B A R R O  
CLARITY MATTERS

## CONTACT

Please talk to your usual Nabarro contact or

Amanda Howard, Funds and Indirect Real Estate Partner  
T +44 (0)20 7524 6044 a.howard@nabarro.com

For further information visit:  
[www.nabarro.com](http://www.nabarro.com)

### London

Lacon House 84 Theobald's Road  
London WC1X 8RW  
T +44 (0)20 7524 6000

### Sheffield

1 South Quay Victoria Quays  
Sheffield S2 5SY  
T +44 (0)114 279 4000

### Brussels

209A Avenue Louise 1050 Brussels  
Belgium  
T +32 2 626 0740

### Singapore

50 Raffles Place  
22-01 Singapore Land Tower  
Singapore 048623  
T +65 6645 3280

Alliance firms:

### France August & Debouzy

**Gilles August**  
T +33 (0)1 45 61 51 80  
[www.august-debouzy.com](http://www.august-debouzy.com)

### Germany GSK Stockmann + Kollegen

**Rainer Stockmann**  
T +49 (30) 20 39 07 - 0  
[www.gsk.de](http://www.gsk.de)

### Italy Nunziante Magrone

**Gianmatteo Nunziante**  
T +39 06 695181  
[www.nunziantemagrone.it](http://www.nunziantemagrone.it)

Nabarro LLP

Registered office: Lacon House, 84 Theobald's Road, London, WC1X 8RW.

Nabarro LLP is a limited liability partnership registered in England and Wales (registered number OC334031). It is a law firm authorised and regulated by the Solicitors Regulation Authority. A list of members of Nabarro LLP and of the non-members who are designated as partners is open to inspection at the registered office. The term partner is used to refer to a member of Nabarro LLP or to an employee or consultant with equivalent standing and qualifications in one of Nabarro LLP's affiliated undertakings.

Detailed specialist advice should be obtained before taking or refraining from any action as a result of the comments made in this publication, which are only intended as a brief introduction to the particular subject. This information is correct on the date of publication.

© Nabarro LLP 2011